

Quick Guide: Setting up email alerts for roadworks in your area

The Surrey roadworks map can be accessed by using either of the following two links

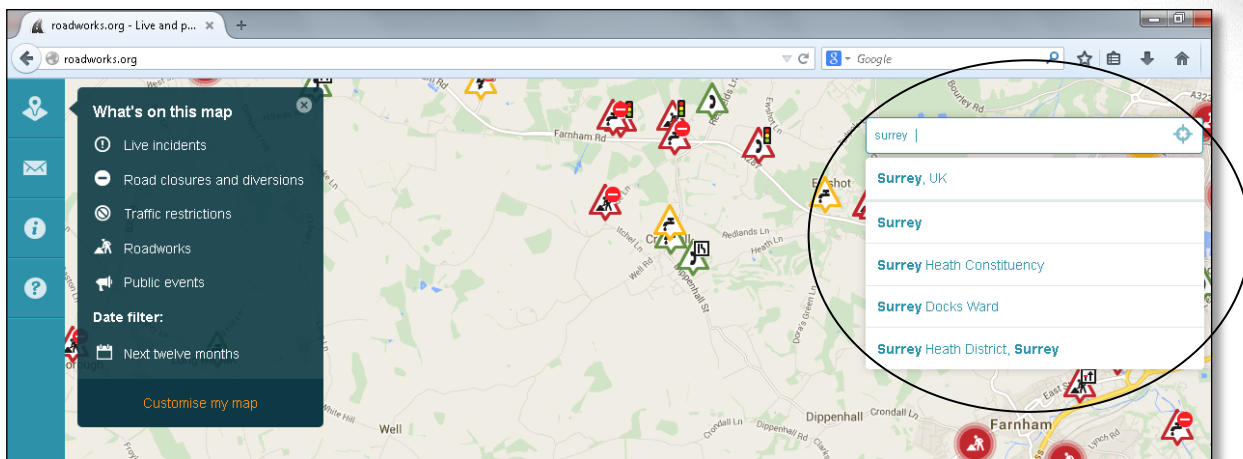
www.surreycc.gov.uk/roadworks and www.roadworks.org

To set up email alerts, we suggest you use www.roadworks.org directly.

Step 1

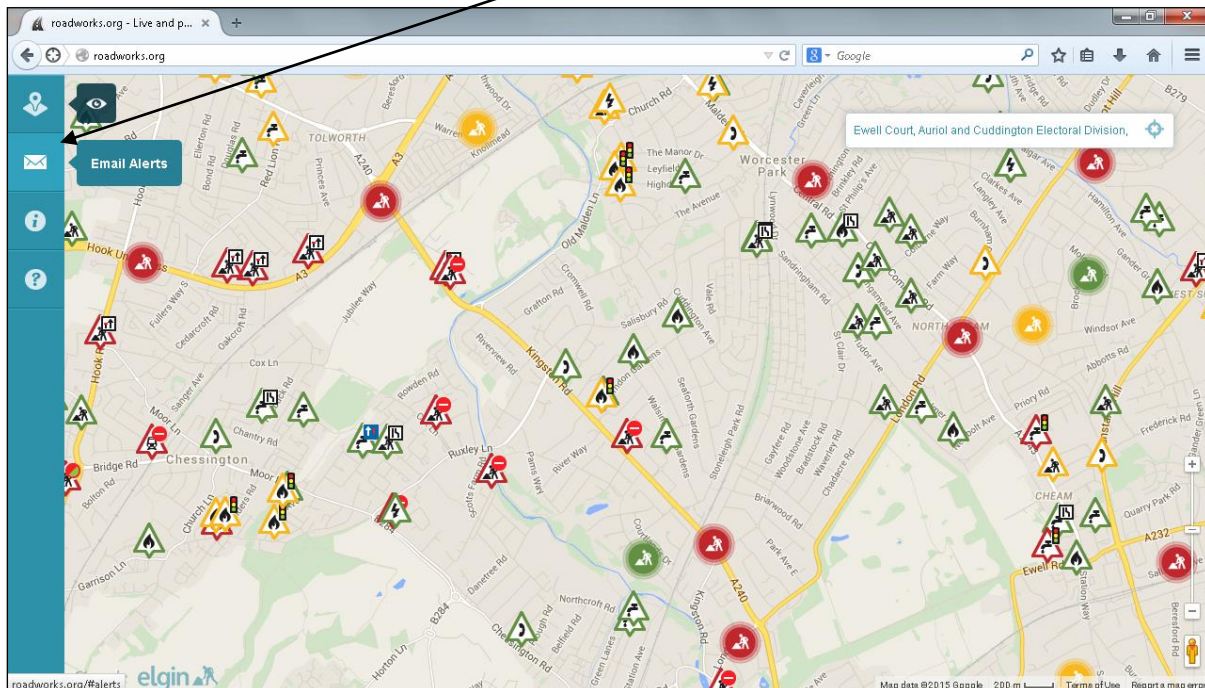
Search for the area which you would like the email alerts to cover and press enter. You can search by postcode, road name, town or village, electoral division, constituency, district or county.

If you want alerts for roads that do not fit exactly into one of these categories, you can draw a **User defined area** (instructions on page 3)



Step 2

On the right hand side menu bar, select the envelope icon for 'Email Alerts'.

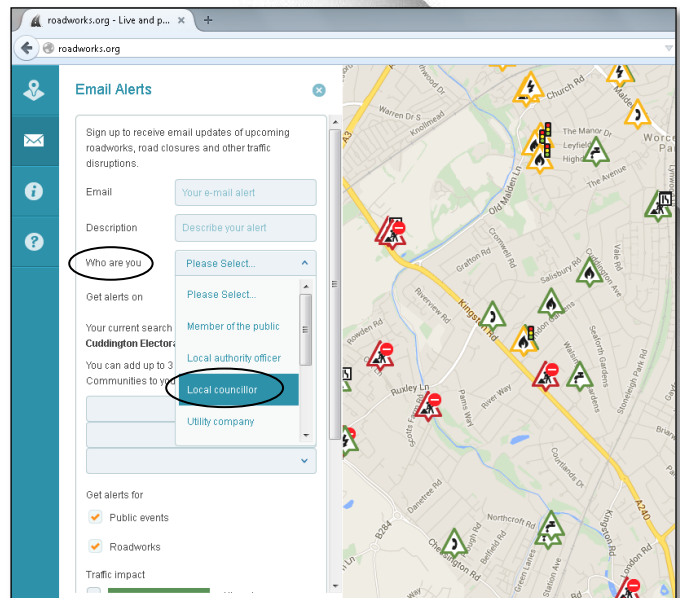
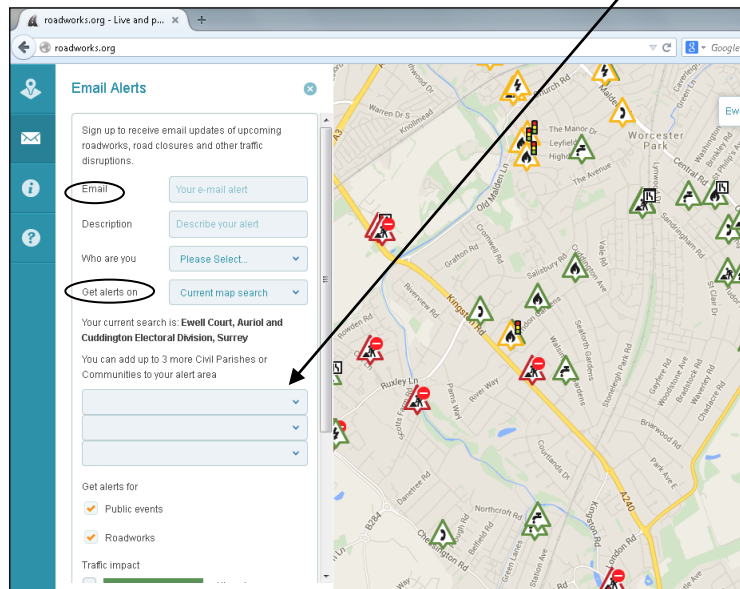


Step 3

There are three answers you need to provide:

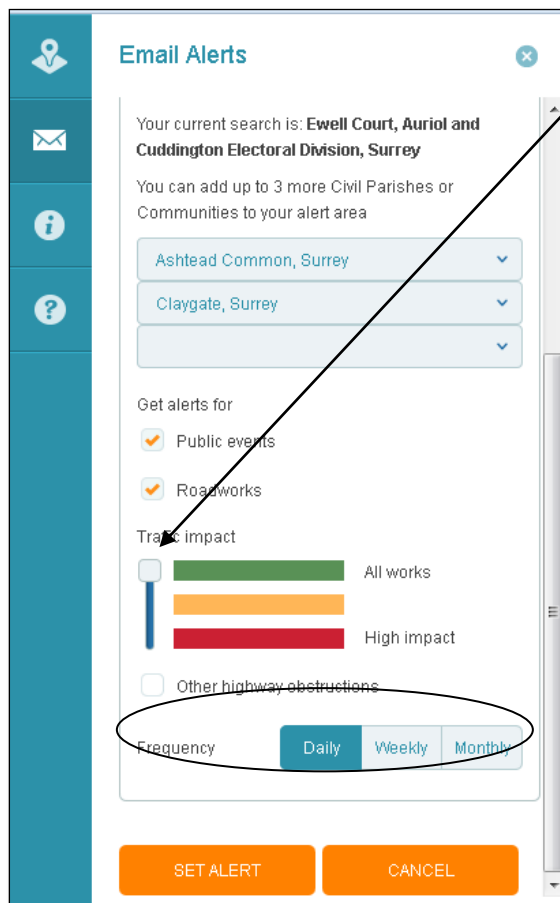
1. Email: enter the email address here to which you wish to receive the alerts
2. Who are you: select the most appropriate option from the drop down menu
3. Get alerts on: select 'Current map search' from the drop down menu

You also have the option of including additional areas on the same alerts, but you could leave the rest blank.



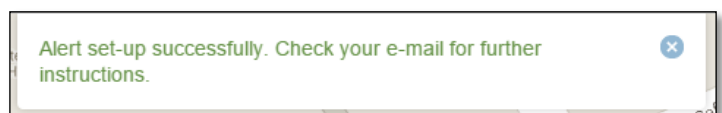
Step 4

You can also select how often you want to receive the alerts and if you want to receive alerts about all works or only when they are likely to have a moderate or a high impact on traffic



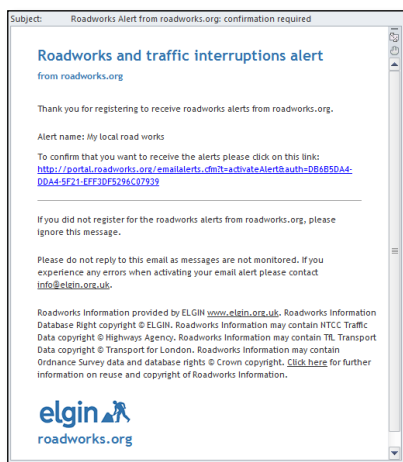
Step 5

Click on 'Set Alert'. You will receive an automated email with further instructions to activate the alert.

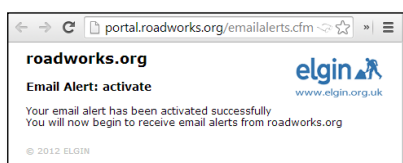


Step 6

Click on the link contained within the email to confirm that you would like to begin receiving email alerts.



You will be redirected to a confirmation page. Your email alert is now active.



User defined area

If you want alerts for roads that do not fit exactly into a pre-defined division or area, you can set this yourself.

Instead of Step 1, jump straight to Step 2 and click on the envelope icon. Under the 'Get alerts on' option, make sure to select 'User defined area'.

You can now create the boundaries of the area you wish to receive alerts on. Once all the boundaries are joined up, the area within will turn grey (example below). Continue with setting up the alerts as normal (see steps 3 to 6).

